



MIL-DTL-32139 Nano-D Single Row Connectors

R06A Series Crimping Connectors

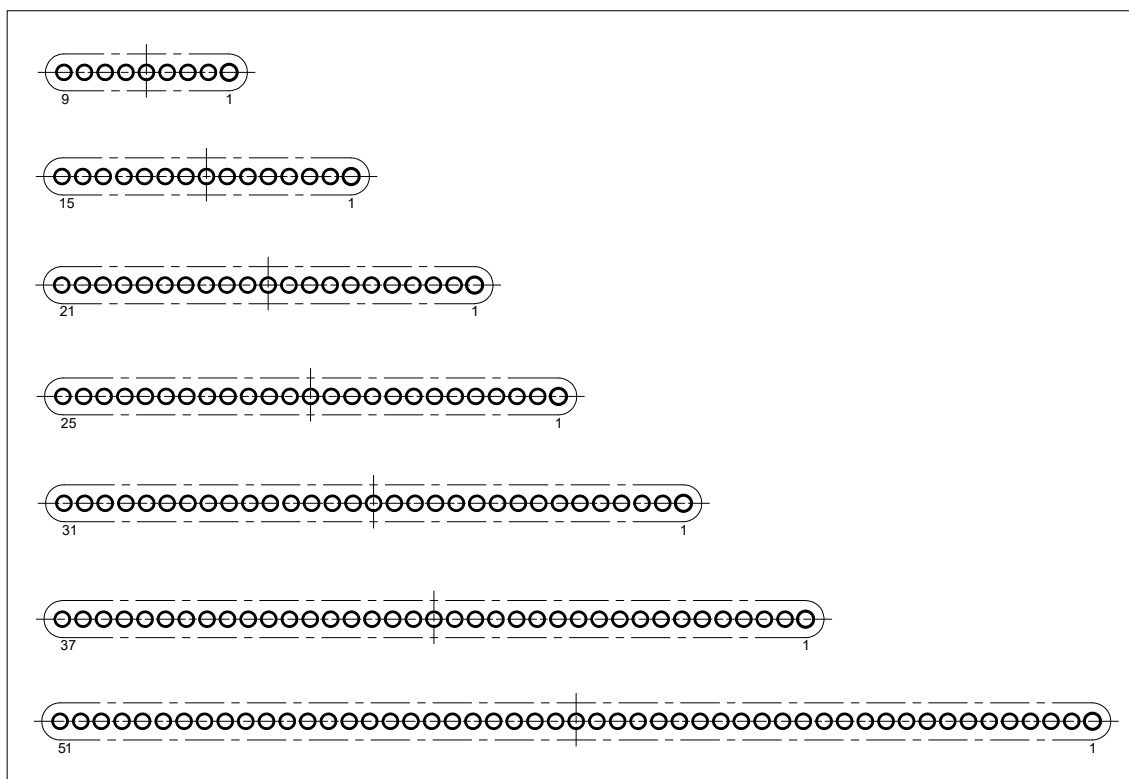
Brief Introduction

- Contacts: 9, 15, 21, 25, 31, 37, 51 pins
- Twist flexible nano pin (twist pin), 0.635mm pitch, nano miniature outline dimension.
- Screw nut locking, it is gently when insert and extract, stably locked.
- It is fit for all kinds for electric circuit system interconnection which have high density, nano, light, highly reliable requirements, it can meet light and miniaturize demand.
- Plug with twist pin, receptacle with socket, free terminal with locking screw, fixed terminal with nut, standard mated connector locked by screw and nut.
- Standard: MIL-DTL-32139.
- The sectional area of crimp conductive cable is 0.035mm^2 .
- Undefined tolerance is $\pm 0.13\text{mm}$

Specifications

- | | | | |
|--|---------------------------------|--------------------------|----------------------------------|
| ■ Environment: | -55°C~+125°C | ■ Contact Resistance: | $\leq 21\text{m}\Omega$ |
| ■ Vibration: | 10HZ~2000HZ 196m/s ² | ■ Insulation Resistance: | $\geq 5000\text{M}\Omega$ 100VDC |
| ■ Shock: | 980m/s ² 6ms | ■ Dielectric Strength: | 250V |
| ■ Rated Current: | 1A | ■ Machine Life: | 200 times |
| ■ Random Vibration: Power spectrum density $0.4\text{G}^2/\text{Hz}$, r.m.s value of total acceleration 23.1G | | | |

Contact Arrangements





How To Order

| | | | | | | | | | | | | | |
|---|------|----|---|---|----|---|----|----|---|----|-----|---|----|
| Series | R06A | -1 | 2 | 1 | -C | 1 | -9 | PI | 0 | JC | -30 | 9 | 10 |
| Contact Row: 1—Single Row | | | | | | | | | | | | | |
| Shell Plating: 2—Nickel Plating | | | | | | | | | | | | | |
| Contact Plating: 1—Gold Plating | | | | | | | | | | | | | |
| Tail Termination Type : C—Crimp | | | | | | | | | | | | | |
| Mounting Style: 1—Free Mounted 4—Crimp Back to Back | | | | | | | | | | | | | |
| Contact Number: 9,15,21,25,31,37,51pins | | | | | | | | | | | | | |
| Contact Type PI — Pin in Plug RH — Socket in Receptacle | | | | | | | | | | | | | |
| Tail Cover : 0—Without Tail Cover 1—With Tail Cover (For Free Mounted C1 Series,Vertical Mounted C2 Series and Horizontal Mounted C3 Series Only) | | | | | | | | | | | | | |
| Locking Hardware Type: 00 —No Locking Hardware JC —Locking Screw (Straight Slot) JC1—Locking Screw (Hex, Not Recommend) TH —Connect Nut NH —Guide Hole With Nut Mounted | | | | | | | | | | | | | |
| Wire Gage: 30—AWG30 | | | | | | | | | | | | | |
| Wire Color: 9—White T—Ten Color Repeating | | | | | | | | | | | | | |
| Wire Length: 10—Wire Length in cm. "10" Specifies 10cm | | | | | | | | | | | | | |

Choose mating connector

- When choosing mating connector with locking accessories usually choose the locking component which one side with connect nut(TH), the other side with locking screw(JC).
- When choosing product with guide accessories,connector without locked component but only with guide component,it need fix on mounting panel after mated,for avoiding connector take off. When choosing mating connector with guide components usually choose the guide component which one side with guide pin, the other side with guide hole.

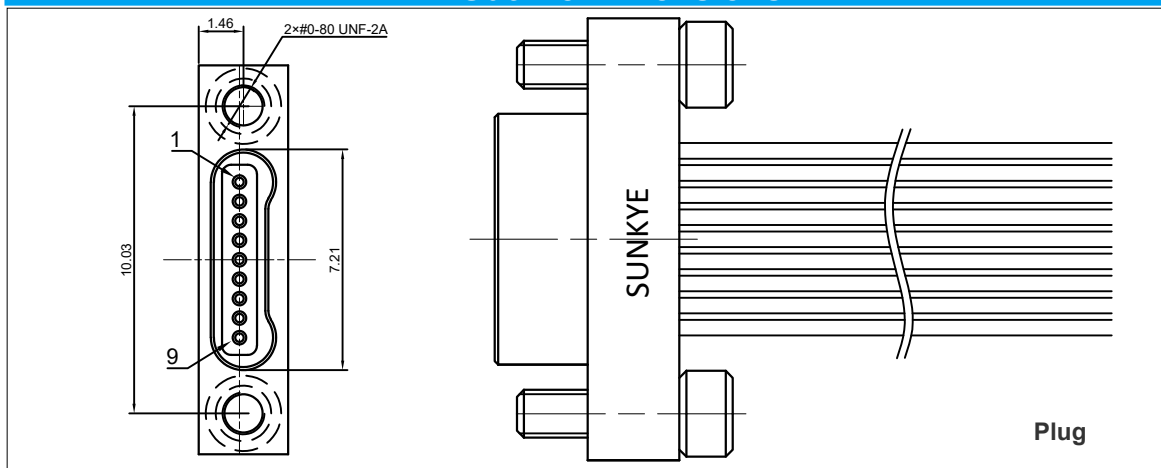
Free Mounted Crimp Series

How To Order

| | | | | | | | | | | | | | |
|--|-------------|----------|----------|----------|-----------|----------|------------|-----------|----------|-----------|------------|----------|-----------|
| Series | R06A | 1 | 2 | 1 | -C | 1 | -25 | PI | 0 | JC | -30 | 9 | 10 |
| Contact Row: | | | | | | | | | | | | | |
| 1—Single Row | | | | | | | | | | | | | |
| Shell Plating: | | | | | | | | | | | | | |
| 2—Nickel Plating | | | | | | | | | | | | | |
| Contact Plating: | | | | | | | | | | | | | |
| 1—Gold Plating | | | | | | | | | | | | | |
| Tail Termination Type: | | | | | | | | | | | | | |
| C—Crimp | | | | | | | | | | | | | |
| Mounting Style: | | | | | | | | | | | | | |
| 1—Free Mounted | | | | | | | | | | | | | |
| Contact Number: | | | | | | | | | | | | | |
| 9,15,21,25,31,37,51pins | | | | | | | | | | | | | |
| Contact Type: | | | | | | | | | | | | | |
| PI—Pin in Plug RH—Socket in Receptacle | | | | | | | | | | | | | |
| Tail Cover: | | | | | | | | | | | | | |
| 0—Without Tail Cover | | | | | | | | | | | | | |
| Locking Hardware Type: | | | | | | | | | | | | | |
| JC—Locking Screw (Straight Slot, "C" Dimension is 1.5mm) JC1— Locking Screw (Hex, Not Recommend , "C" Dimension is 2.1mm) | | | | | | | | | | | | | |
| Wire Gage: | | | | | | | | | | | | | |
| 30—AWG30 | | | | | | | | | | | | | |
| Wire Color: | | | | | | | | | | | | | |
| 9—White T—Ten Color Repeating | | | | | | | | | | | | | |
| Wire Length: | | | | | | | | | | | | | |
| 10—Wire Length in cm. "10" Specifies 10cm | | | | | | | | | | | | | |

Remark: 1. Locking screws are fixed on the outer shell, can't be disassembled
2. Connectors are free mounted, not fixed, usually mated with connectors with nuts.
3. Recommend JC Screws (straight slot screw), tightened by miniature straight screwdriver.
4. When choosing JC1 Screws (hex screw), tightened by 1.27mm subsize hex screwdriver.

Outline Dimensions

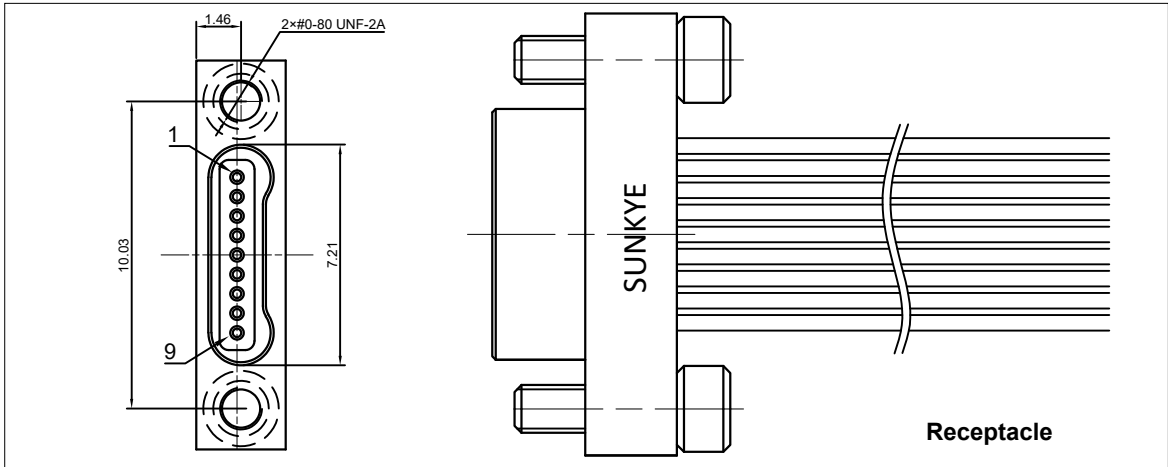


| Pin Count | Dimensions | | | Pin Count | Dimensions | | |
|-----------|------------|-------|-------|-----------|------------|-------|-------|
| | A | B | C | | A | B | C |
| 9pins | 12.70 | 10.03 | 7.21 | 15pins | 16.51 | 13.84 | 11.02 |
| 21pins | 20.32 | 17.65 | 14.83 | 25pins | 22.86 | 20.19 | 17.37 |
| 31pins | 26.67 | 24.00 | 21.18 | 37pins | 30.48 | 27.81 | 24.99 |
| 51pins | 39.37 | 36.70 | 33.88 | | | | |

Remark: All dimensions are in mm.



Outline Dimensions



| Pin Count | Dimensions | | | Pin Count | Dimensions | | |
|-----------|------------|-------|-------|-----------|------------|-------|-------|
| | A | B | C | | A | B | C |
| 9pins | 12.70 | 10.03 | 7.21 | 15pins | 16.51 | 13.84 | 11.05 |
| 21pins | 20.32 | 17.65 | 14.86 | 25pins | 15.60 | 11.94 | 17.40 |
| 31pins | 26.67 | 24.00 | 21.21 | 37pins | 30.48 | 27.81 | 25.02 |
| 51pins | 39.37 | 36.70 | 33.91 | | | | |

Free Mounted Crimp Connector with Tail Cover Series

How To Order

| | | | | | | | | | | | | | | |
|-------------------------------|--|-----------|----------|----------|-----------|----------|------------|-----------|----------|-----------|-----------|------------|----------|-----------|
| Part Number: | R06A | -1 | 2 | 1 | -C | 1 | -25 | PI | 1 | E1 | JC | -30 | 9 | 10 |
| Series: | R06A—Nano-D Connectors For MIL-DTL-32139 | | | | | | | | | | | | | |
| Contact Row: | 1—Single Row | | | | | | | | | | | | | |
| Shell Plating: | 2—Nickel Plating | | | | | | | | | | | | | |
| Contact Plating: | 1—Gold Plating | | | | | | | | | | | | | |
| Tail Termination Type: | C—Crimp | | | | | | | | | | | | | |
| Mounting Style: | 1—Free Mounted | | | | | | | | | | | | | |
| Contact Number: | 9,15,21,25,31,37,51pins | | | | | | | | | | | | | |
| Contact Type: | PI—Pin in Plug RH—Socket in Receptacle | | | | | | | | | | | | | |
| Tail Cover: | 1—With Tail Cover | | | | | | | | | | | | | |
| Extended Type: | No Code—Standard Type E1—Braided Shield Install (Nickel over Copper) E2—Braided Shield Install (Silver over Copper) | | | | | | | | | | | | | |
| Locking Hardware Type: | JC—Locking Screw (Straight Slot, "E" Dimension is 1mm, See Page 167 Outline Dimensions) JC1— Locking Screw (Hex, Not Recommend . "E" Dimension is 1.6mm, See Page 167 Outline Dimensions) | | | | | | | | | | | | | |
| Wire Gage: | 30—AWG30 | | | | | | | | | | | | | |
| Wire Color: | 9—White T—Ten Color Repeating | | | | | | | | | | | | | |
| Wire Length: | 10—Wire Length in cm. "10" Specifies 10cm | | | | | | | | | | | | | |

Remark: 1. Connector with integrated tail cover, binned shielded jacket on tail cover, shielded whole connector and tail cover is non-removable.
 2. Connectors are free mounted, not fixed, usually mated with connectors with nuts.
 3. Recommend JC Screws (straight slot screw), tightened by miniature straight screwdriver.
 4. When choosing JC1 Screws (hex screw), tightened by 1.27mm subtense hex screwdriver.

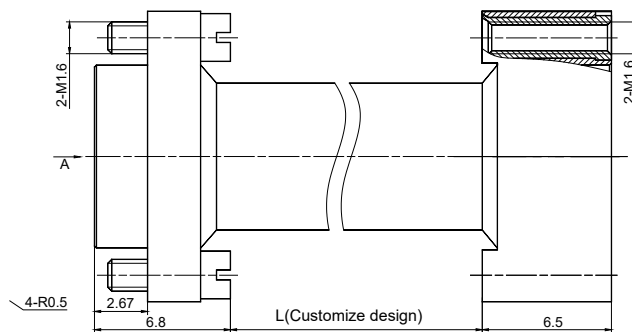


Crimp Back to Back Connector Series

How To Order

| | | | | | | | | | | | | | |
|---|------|----|---|---|----|---|-----|----|---|-----|----|---|----|
| Series | R06A | -1 | 2 | 1 | -C | 4 | -25 | PI | 0 | -JC | 30 | 9 | 10 |
| Contact Row: | | | | | | | | | | | | | |
| 1—Single Row | | | | | | | | | | | | | |
| Shell Plating: | | | | | | | | | | | | | |
| 2—Nickel Plating | | | | | | | | | | | | | |
| Contact Plating: | | | | | | | | | | | | | |
| 1—Gold Plating | | | | | | | | | | | | | |
| Tail Termination Type: | | | | | | | | | | | | | |
| C—Crimp | | | | | | | | | | | | | |
| Mounting Style: | | | | | | | | | | | | | |
| 4—Crimp Back to Back | | | | | | | | | | | | | |
| Contact Number: | | | | | | | | | | | | | |
| 9,15,21,25,31,37,51pins | | | | | | | | | | | | | |
| Contact Type: | | | | | | | | | | | | | |
| PI—Pin (Plug Connector Both Ends) | | | | | | | | | | | | | |
| RH—Socket (Receptacle Connector Both Ends) | | | | | | | | | | | | | |
| PH—Pin Connector to Socket Connector | | | | | | | | | | | | | |
| Tail Cover: | | | | | | | | | | | | | |
| 0—Without Tail Cover | | | | | | | | | | | | | |
| Locking Hardware Type: | | | | | | | | | | | | | |
| JC—Locking Screw (Straight Slot, For Plug Connector Only) | | | | | | | | | | | | | |
| TH—Connect Nut (For Receptacle Connector Only) | | | | | | | | | | | | | |
| Wire Gage: | | | | | | | | | | | | | |
| 30—AWG30 | | | | | | | | | | | | | |
| Wire Color: | | | | | | | | | | | | | |
| 9—White | | | | | | | | | | | | | |
| T—Ten Color Repeating | | | | | | | | | | | | | |
| Wire Length: | | | | | | | | | | | | | |
| 10—Wire Length in cm. "10" Specifies 10cm | | | | | | | | | | | | | |

Outline Dimensions



Plug

Receptacle

| Pin Count | Dimensions | | Pin Count | Dimensions | | Pin Count | Dimensions | |
|-----------|------------|-------|-----------|------------|-------|-----------|------------|-------|
| | A | B | | A | B | | A | B |
| 9pins | 9.63 | 6.86 | 15pins | 11.53 | 8.76 | 21pins | 13.44 | 10.67 |
| 25pins | 14.71 | 11.94 | 31pins | 16.61 | 13.84 | 37pins | 18.52 | 15.75 |
| 51pins | 22.96 | 20.19 | 65pins | 27.41 | 24.64 | 69pins | 28.68 | 25.91 |

Remark: All dimensions are in mm.