



Company Profile:

Sunkye International Co., Limited.(Connector) Business Group, with sixty five years of experience, specializes in designing and producing connectors, related components and cables. A wide range of connector products, twist pin connector, optical fiber connector, RF coaxial connector, separable connector, custom and application-

Company profile

specific connector, etc, which are widely used in military area: aerospace, aviation, electrical, ship-building, defense system, etc and civil area: communication, telecom, automotive, rail, etc.

Design team focuses on meeting customers' requirement with continuous innovative technology, manufacture team provides high quality products by utilizing advanced equipments in standardized processes to ensure customers' benefits.

Sunkye is ISO 9001 certified, UL, VDE, CE certification passed, and ensures products quality by testing in realistic conditions with advanced test facilities, professional test employees.

Sunkye team is committed to offering high quality products, best service, prompt delivery and competitive price for you.



Manufacture Equipment:

Five-Axis CNC, AGIE EDM, SODICK WEDM-LS, 40G Vector Network Analyzers, Vacuum Heat Treatment Equipment, Glass-sintered System, Laser Processing Center, High Velocity Ram Machine, Gold, Nickel and Cadmium Plating Production Line, Thermosetting Injection Machine, Thermoplastic Injection Machine, Swiss Automatic Lathe, etc.

Test Facilities:

Comprehensive Test Instrument of Temperature, Humidity and Vibration; Experimental Box of Temperature and Shock; layer thickness meter; Coordinate Measurement Machine, etc.



www.sunhye.com

MIL-DTL-83513 Micro-D Connectors

SUNHYE



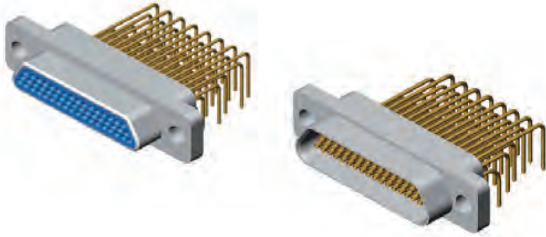
CONTENT



MIL-DTL-83513 Micro-D Connectors
R04J Series Right Angle to PCB Connectors

MIL-DTL-83513 Micro D-Sub Connectors

R04J Series Right Angle to PCB Connectors



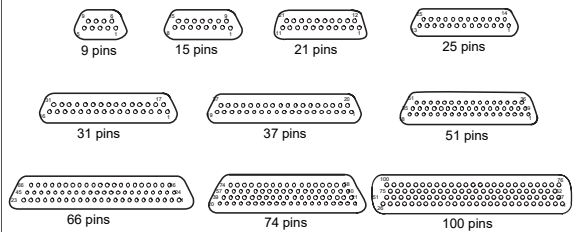
Brief Introduction

- Micro-D Connectors
- Twist Pin Contacts, High Density
- Metal Shell, Nickel or Cadmium Plating
- Right Angle to PCB Connectors
- Meets MIL-DTL-83513

Specifications

- Environment Temperature: -55°C~+125°C
- Vibration: 10Hz~2000Hz, 196m/s²
- Random Vibration: Power spectrum density 0.4G²/Hz
root mean square value of total acceleration 23.1G
- Shock: 735m/s² 11sm
- Rated Current: 3A
- Contact Resistance: ≤10mΩ
- Insulation Resistance: ≥5000MΩ
- Dielectric Strength: 800V
- Durability: 500 times

Contact Arrangements



How To Order

Sample Part Number	R04J	-25	PI	F	1	Q7	G	Q	-J
Series:	R04J—Standard Type R04JA—Fast Lock Type R04JC—Sn-P Bronze Shell, Nickel Plating								
Contact Number:	9, 15, 21, 25, 31, 37, 51, 66, 74, 100pins								
Contact Type :	PI—Pin in Plug RH—Socket in Receptacle								
Tail Termination Type:	F—90° Right Angle to PCB								
Tail Length:	1—3.0mm				2—5.5mm				
Locking Hardware Type:	Q7—Locking Hardware (See page 2)				No Code—No Locking Hardware				
Shell Material and Finish :	G—Aluminum Shell, Cadmium Plating				No Code—Aluminum Shell, Nickel Plating				
Extended Series :	No Code—Standard Type Q—Widened Flange Q8—The Sizes of Flange and Assembly Hole are Enlarged								
PCB layout :	J—1.27*2.54mm				No Code—2.54*2.54mm				



Free End Locking Hardware For R04J Series Right Angle To PCB Connectors

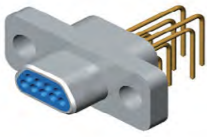
Type	A	B	Outline Dimensions	Assembly Picture	Matched with Locking Hardware
W	M2-6h	7.1			Q, Q0, Q2, Q3, Q4, Q5, Q7, Q8, Q9, Q10, Q11, Q14, Q15, Q17, Q23, Q25, Q29, Q32, Q35, Q36, Q37, Q41, Q42, Q43, Q45, Q46
W8	#2-56UNC-2A	7.1			Q1
W7	M2-6h	7.1			Q, Q0, Q2, Q3, Q4, Q5, Q7, Q8, Q9, Q10, Q11, Q14, Q15, Q17, Q23, Q25, Q29, Q32, Q35, Q36, Q37, Q41, Q42, Q43, Q45, Q46
N	M2-6h				Q, Q0, Q2, Q3, Q4, Q5, Q7, Q8, Q9, Q10, Q11, Q14, Q15, Q17, Q23, Q25, Q29, Q32, Q35, Q36, Q37, Q41, Q42, Q43, Q45, Q46
N1	#2-56UNC-2A				Q1

Fixed End Locking Hardware For R04J Series Right Angle To PCB Connectors

Type	Pin Count	A	B	C	D	E	Outline Dimensions	Assembly Picture	Matched with Locking Hardware
Q2	9~37	4.2	7.6	11.6	3.7	1			W, W7, W9, N Note: Use with rear panel mounting right angle to PCB connectors
	51	4.2	8.7	11.6	3.7	1			
	74	4.2	9.7	11.6	3.7	1			
	100	8.8	9.7	11.6	3.7	1			
Q14	9~37	4.2	7.6	10.7	1.7	3			
	51	4.2	8.7	10.7	1.7	3			
	74	4.2	9.7	10.7	1.7	3			
	100	8.8	9.7	10.7	1.7	3			
Q7	9~37	4.2	7.6	10.7					
	51	4.2	8.7	10.7					
	74	4.2	9.7	10.7					
	100	8.8	9.7	10.7					
Q42	9~37	4.2	7.6	9.7					
	51	4.2	8.7	9.7					
	74	4.2	9.7	9.7					
	100	8.8	9.7	9.7					
Q15	9~37	7.6	1.9	2.5	9.7				
	51	8.7	1.9	2.5	9.7				
Q35	9~37	7.6	2.4	1.8	9.5				
	51	8.7	2.4	1.8	9.5				
V1	9~37	4.2	7.6	9.7					
	51	4.2	8.7	9.7					
	74	4.2	9.7	9.7					
	100	8.8	9.7	9.7					

Remark: 1. Fixed end locking hardware apply to fix the connectors on the mounting panels or the PCB. Most fixed end locking hardware can be mated with free end locking hardware, but a little can not. (eg. V1)
2. All dimensions are in mm.

R04J Series Right Angle To PCB Connectors - Basic Type



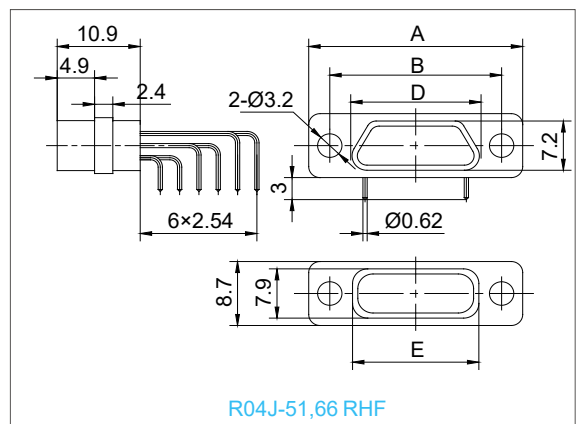
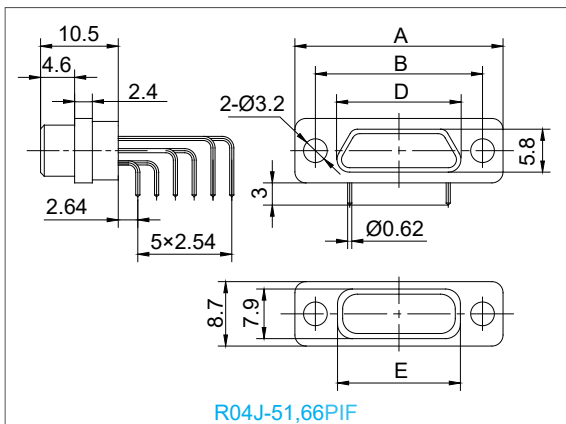
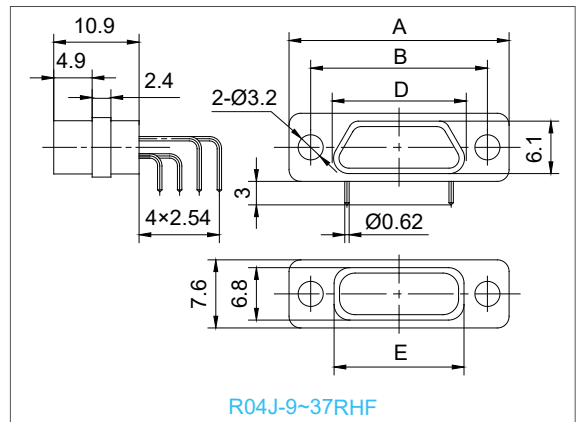
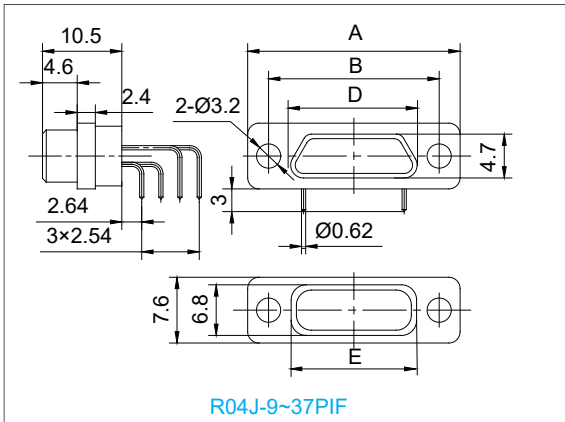
Plug:PIF



Receptacle:RHF

- **Shell Plating:** Nickel or Cadmium
- **PCB Layout:** 2.54*2.54mm
- **Contacts:**
R04J- 9, 15, 21, 25, 31, 37, 51, 66PI/RHF

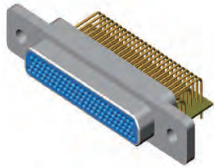
Outline Dimensions



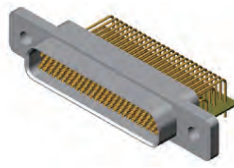
Part Number	A	B	D		E
			PIF	RHF	
R04J-9PI/RHF	19.6	14.3	8.3	9.8	9.9
R04J-15PI/RHF	23.5	18.2	12.3	13.7	13.8
R04J-21PI/RHF	27.4	22	16	17.4	17.6
R04J-25PI/RHF	29.8	24.5	18.6	20	20.2
R04J-31PI/RHF	33.6	28.3	22.4	23.8	24
R04J-37PI/RHF	37.4	32.2	26.3	27.7	27.8
R04J-51PI/RHF	36.4	30.86	25	26.5	26.6
R04J-66PI/RHF	42.9	37.3	31.4	32.9	33

Remark:All dimensions are in mm.

R04J Series Right Angle To PCB Connectors - Type J



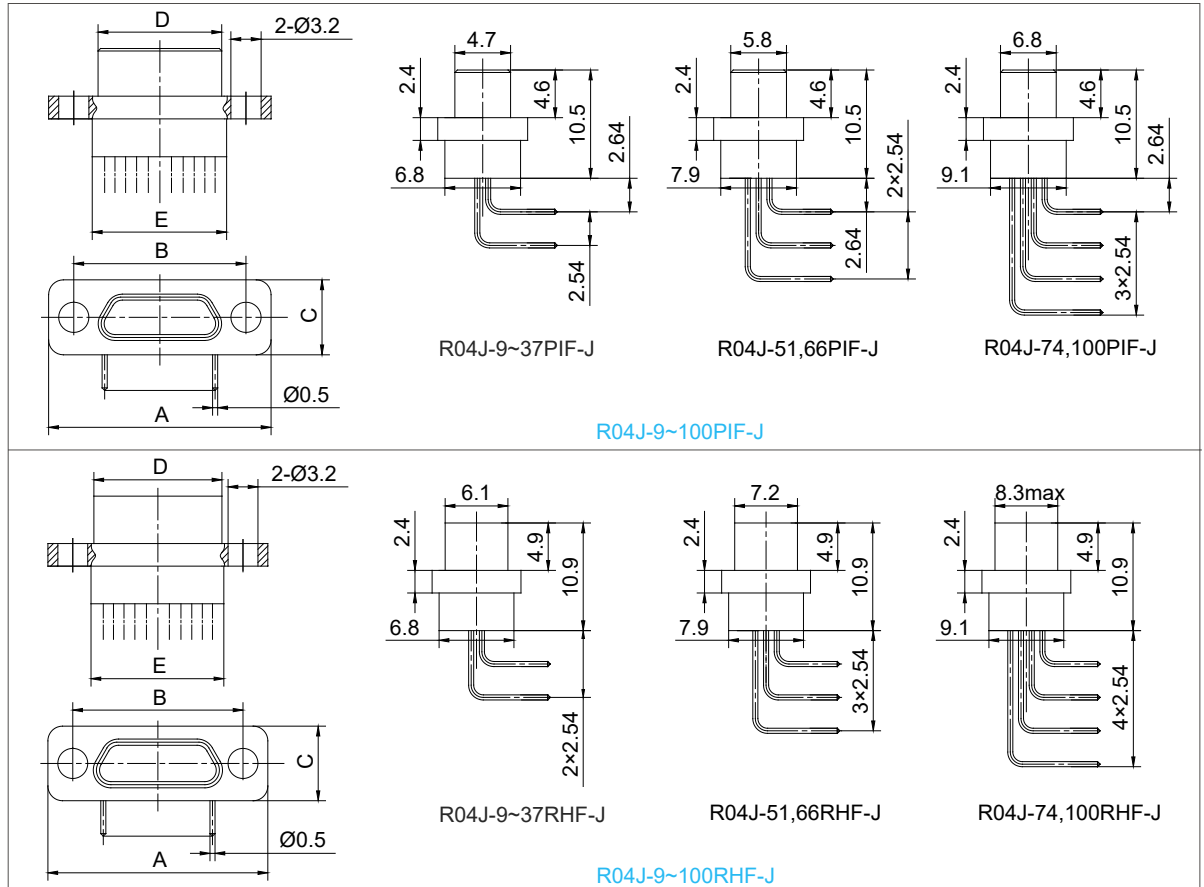
Plug:PIF-J



Receptacle:RHF-J

- **Shell Plating:** Nickel or Cadmium
- **PCB Layout:** 1.27*2.54mm
- **Contacts:**
R04J- 9, 15, 21, 25, 31, 37, 51, 66, 74, 100PI/RHF-J

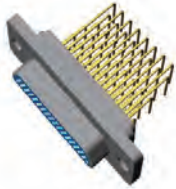
Outline Dimensions



Part Number	A	B	C	D		E
				PIF-J	RHF-J	
R04J-9PI/RHF-J	19.6	14.3	7.6	8.3	9.8	9.9
R04J-15PI/RHF-J	23.5	18.2	7.6	12.3	13.7	13.8
R04J-21PI/RHF-J	27.4	22	7.6	16	17.4	17.6
R04J-25PI/RHF-J	29.8	24.5	7.6	18.6	20	20.2
R04J-31PI/RHF-J	33.6	28.3	7.6	22.4	23.8	24
R04J-37PI/RHF-J	37.4	32.2	7.6	26.3	27.7	27.8
R04J-51PI/RHF-J	36.4	30.86	8.7	25	26.5	26.6
R04J-66PI/RHF-J	42.9	37.3	8.7	31.4	32.9	33
R04J-74PI/RHF-J	38.8	33.5	9.7	27.5	29	29.1
R04J-100PI/RHF-J	54.7	45.7	9.7	35	36.6	36.6

Remark: All dimensions are in mm.

R04J Series Right Angle To PCB Connectors - Type Q8



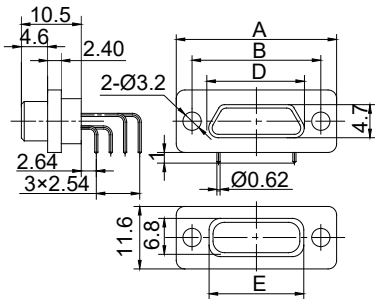
Plug:PIF-Q8



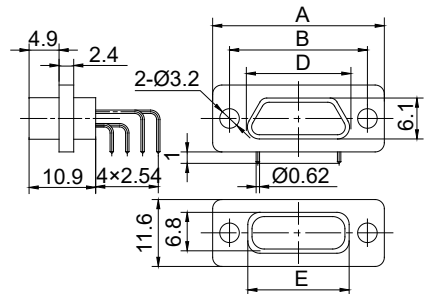
Receptacle:RHF-Q8

- **Shell Plating:** Nickel or Cadmium
- **PCB Layout:** 2.54*2.54mm
- **Contacts:**
R04J- 9, 15, 21, 25, 31, 37, 51PI/RHF-Q8

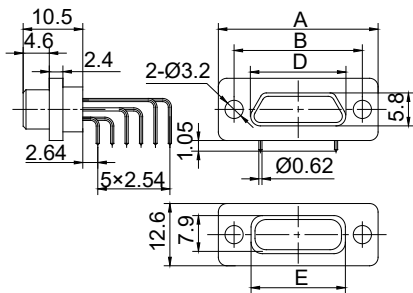
Outline Dimensions



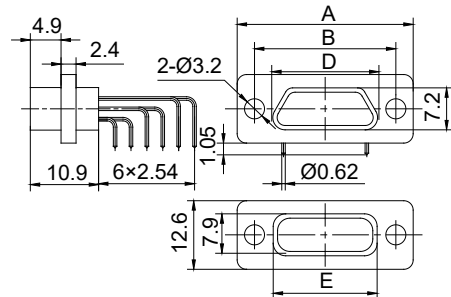
R04J-9~37PIF-Q8



R04J-9~37RHF-Q8



R04J-51PIF-Q8



R04J-51RHF-Q8

Part Number	A	B	D		E
			PIF-Q8	RHF-Q8	
R04J-9PI/RHF-Q8	21.4	16.1	8.3	9.8	11.7
R04J-15PI/RHF-Q8	25.3	20	12.3	13.7	15.6
R04J-21PI/RHF-Q8	29.2	23.8	16	17.4	19.4
R04J-25PI/RHF-Q8	31.6	26.3	18.6	20	22
R04J-31PI/RHF-Q8	35.4	30.1	22.4	23.8	25.8
R04J-37PI/RHF-Q8	39.2	34	26.3	27.7	29.6
R04J-51PI/RHF-Q8	38.2	32.6	26.5	26.5	28.4

Remark:All dimensions are in mm.

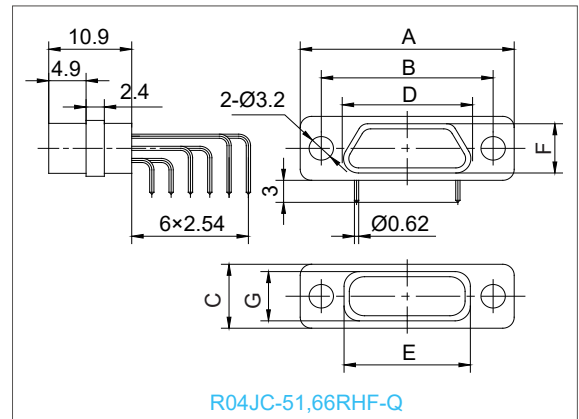
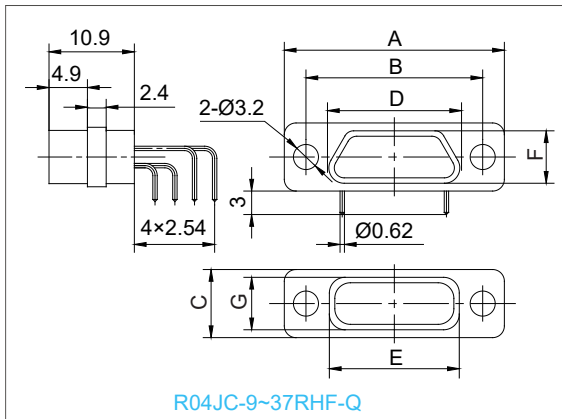
R04JC Series Right Angle To PCB Connectors - Extend Type Q8



Receptacle:R04JC-*RHF-Q

- Sn-p Outer Shell, Nickel Plating
- **PCB Layout:** 2.54*2.54mm
- Widen The Flange
- Receptacle Connectors
- **Contacts:**
R04JC-9, 15, 21, 25, 31, 37, 51, 66RHF-Q

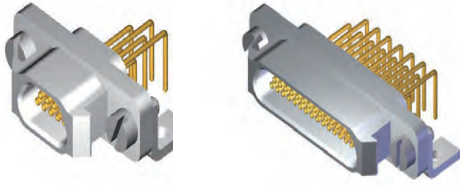
Outline Dimensions



Part Number	A	B	C	D	E	F	G
R04JC-9RHF-Q	26	21	14	9.8	9.9	6.1	6.8
R04JC-15RHF-Q	29.9	24.9	14	13.7	13.8	6.1	6.8
R04JC-21RHF-Q	33.8	28.7	14	17.4	17.6	6.1	6.8
R04JC-25RHF-Q	36.2	31.2	14	20	20.2	6.1	6.8
R04JC-31RHF-Q	40	35	14	23.8	24	6.1	6.8
R04JC-37RHF-Q	43.8	38.9	14	27.7	27.8	6.1	6.8
R04JC-51RHF-Q	42.6	37.6	15.2	26.5	26.6	7.2	7.9
R04JC-66RHF-Q	49.3	44	15.2	32.9	33	7.2	7.9

Remark:All dimensions are in mm.

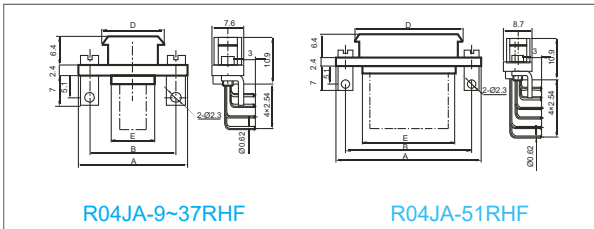
R04JA Series Right Angle To PCB Connectors - Basic Type



Receptacle:R04JA-*RHF

- With Fast Lock Function
- **Shell Plating:** Nickel or Cadmium
- **PCB Layout:** 2.54*2.54mm
- Receptacle Connectors
- **Contacts:**
R04JA- 9, 15, 21, 25, 31, 37, 51RHF

Outline Dimensions

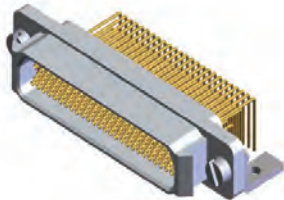


R04JA-9~37RHF

R04JA-51RHF

Part Number	A	B	D	E
R04JA-9RHF	23.4	18.6	14.3	9.8
R04JA-15RHF	27.4	22.6	18.3	13.8
R04JA-21RHF	31.1	26.3	22	17.5
R04JA-25RHF	33.7	28.9	24.6	20.1
R04JA-31RHF	37.5	32.7	28.4	24.1
R04JA-37RHF	41.4	36.6	32.3	27.8
R04JA-51RHF	40.1	35.5	31	26.5

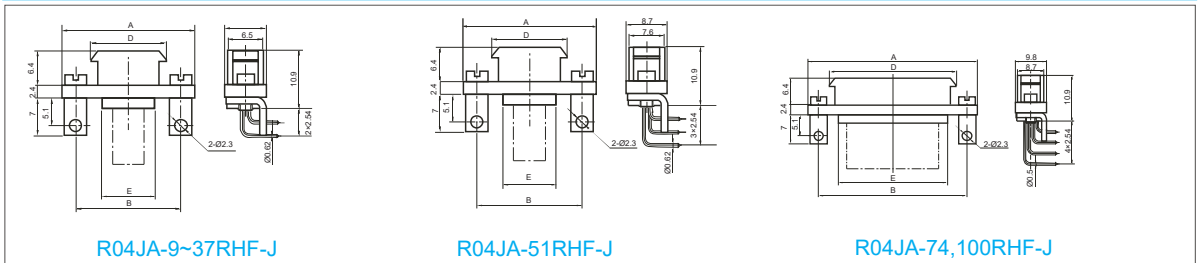
R04JA Series Right Angle To PCB Connectors - Type J



Receptacle:R04JA-*RHF-J

- With Fast Lock Function
- **Shell Plating:** Nickel or Cadmium
- **PCB Layout:** 1.27*2.54mm
- Receptacle Connectors
- **Contacts:**
R04JA- 9, 15, 21, 25, 31, 37, 51, 66, 74, 100RHF-J

Outline Dimensions



R04JA-9~37RHF-J

R04JA-51RHF-J

R04JA-74,100RHF-J

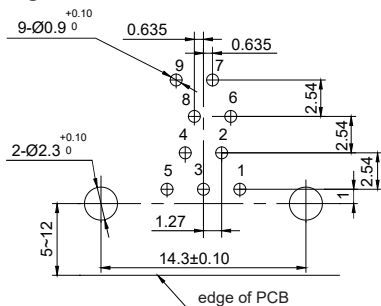
Part Number	A	B	D	E
R04JA-9RHF-J	23.4	18.6	14.3	9.8
R04JA-15RHF-J	27.4	22.6	18.3	13.8
R04JA-21RHF-J	31.1	26.3	22	17.5
R04JA-25RHF-J	33.7	28.9	24.6	20.1
R04JA-31RHF-J	37.5	32.7	28.4	24.1
R04JA-37RHF-J	41.4	36.6	32.3	27.8
R04JA-51RHF-J	40.1	35.3	31	26.5
R04JA-74RHF-J	42.6	37.8	33.5	29
R04JA-100RHF-J	50.1	45.3	41	36.5

Remark:All dimensions are in mm.

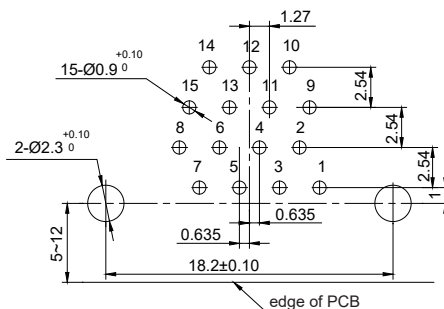


R04J Series Right Angle to PCB Connectors Basic Type--PCB Layout

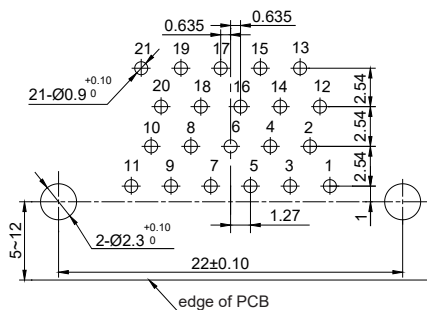
- Patterns Shown are for Connectors Mounting Side of PC Board
- PCB Layout: 2.54*2.54mm
- Plug Connectors: R04J-9~66PIF



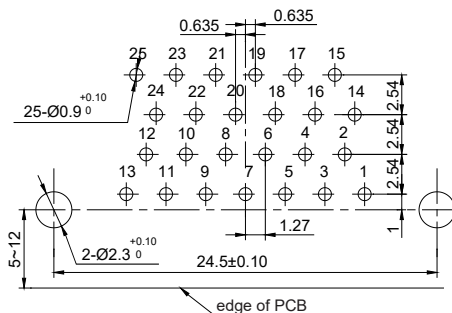
R04J-9PIF



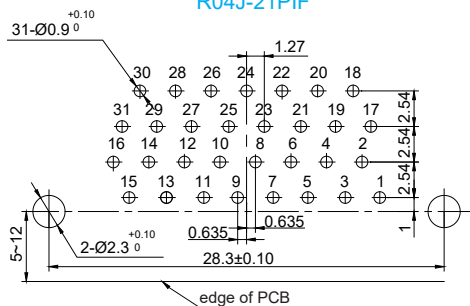
R04J-15PIF



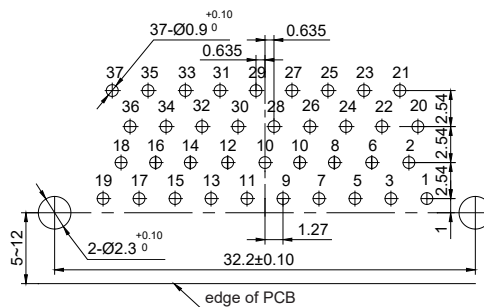
R04J-21PIF



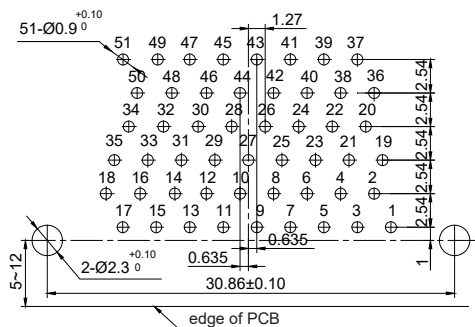
R04J-25PIF



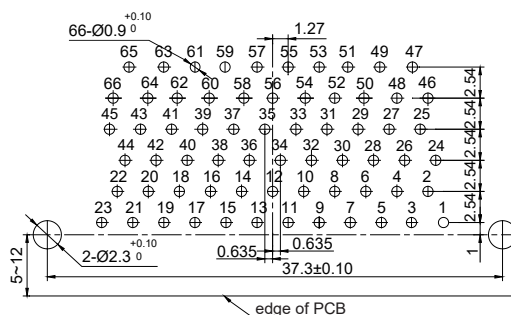
R04J-31PIF



R04J-37PIF



R04J-51PIF



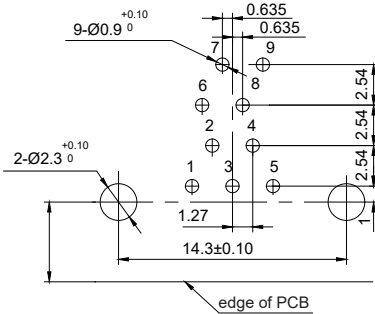
R04J-66PIF

Remark: All dimensions are in mm.

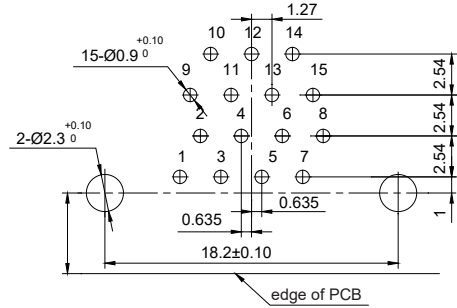


R04J Series Right Angle to PCB Connectors Basic Type--PCB Layout

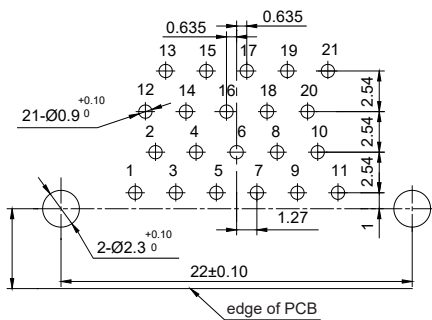
- Patterns Shown are for Connectors Mounting Side of PC Board
- PCB Layout: 2.54*2.54mm
- Receptacle Connectors: R04J-9~66RHF



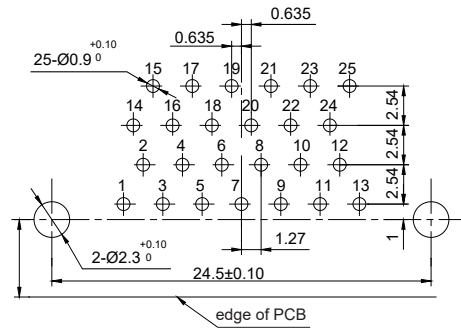
R04J-9RHF



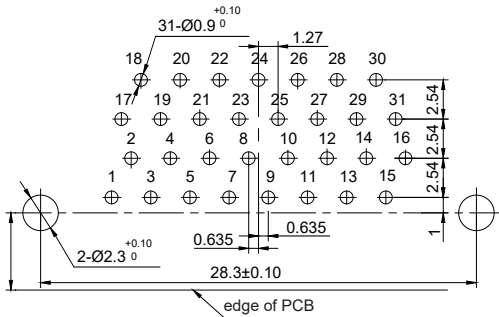
R04J-15RHF



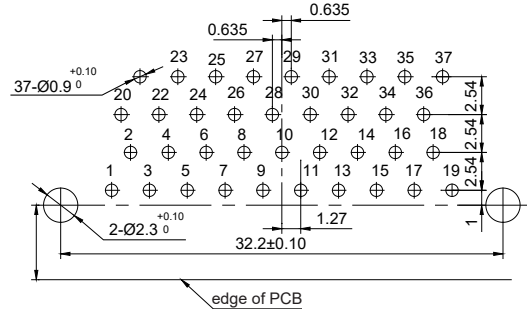
R04J-21RHF



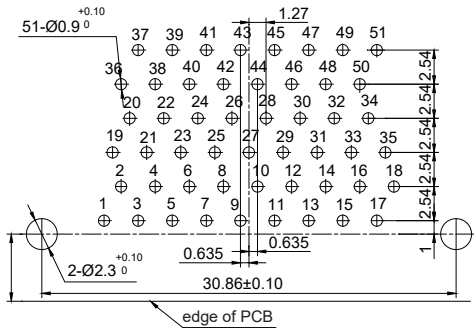
R04J-25RHF



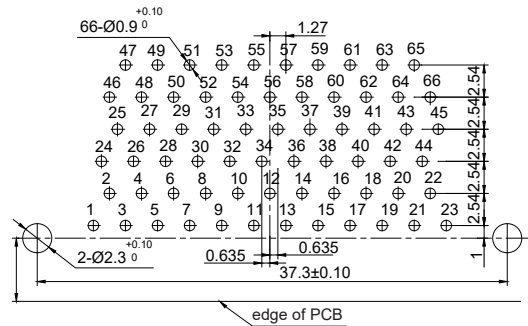
R04J-31RHF



R04J-37RHF



R04J-51RHF

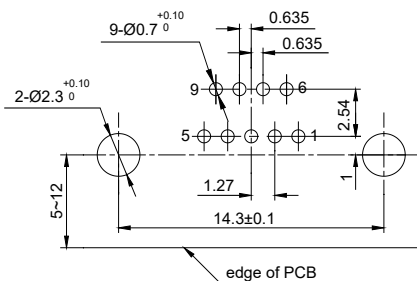


R04J-66RHF

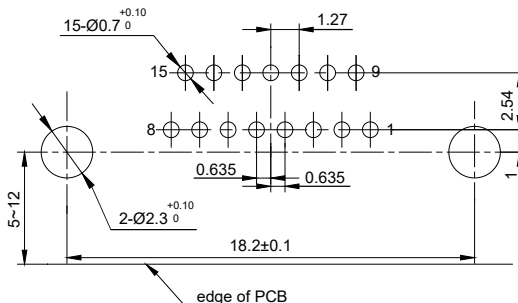
Remark: All dimensions are in mm.

R04J Series Right Angle to PCB Connectors Type J--PCB Layout

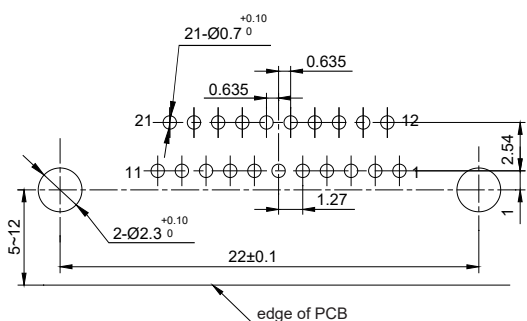
- Patterns Shown are for Connectors Mounting Side of PC Board
- PCB Layout: 1.27*2.54mm
- Plug Connectors: R04J-9~100PIF-J



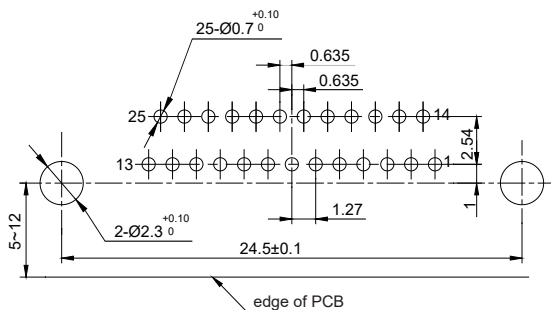
R04J-9PIF-J



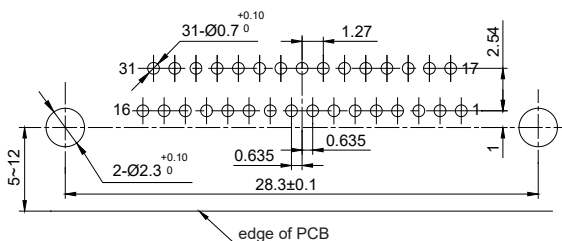
R04J-15PIF-J



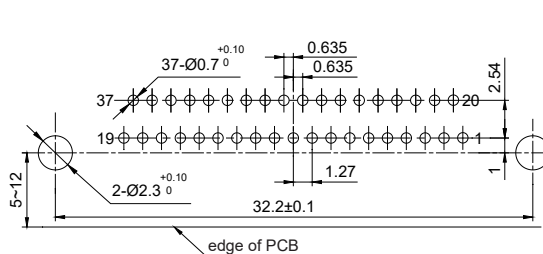
R04J-21PIF-J



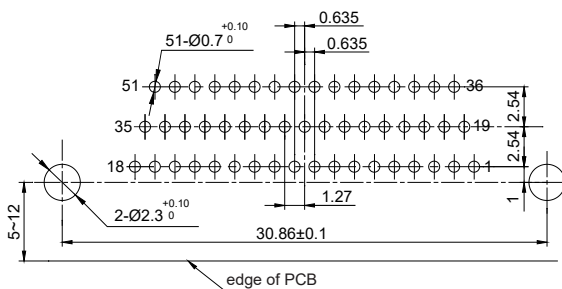
R04J-25PIF-J



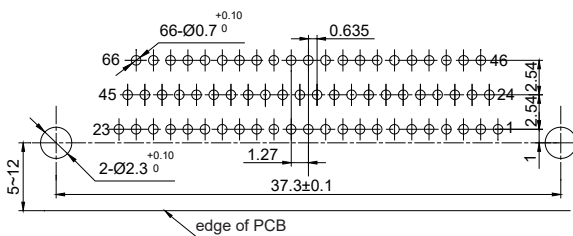
R04J-31PIF-J



R04J-37PIF-J

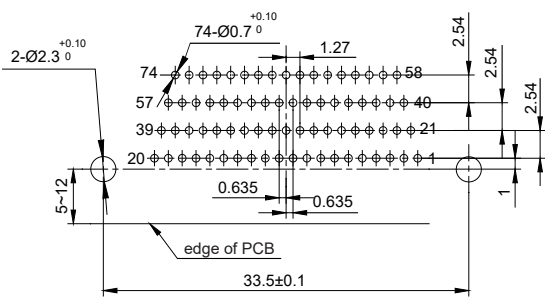


R04J-51PIF-J

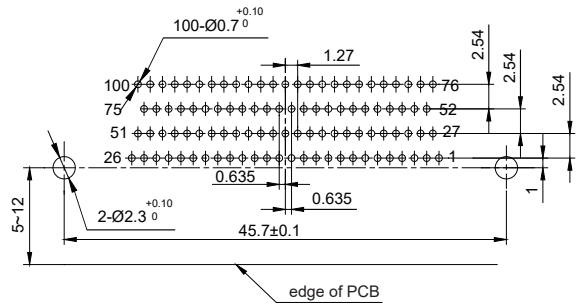


R04J-66PIF-J

Remark: All dimensions are in mm.



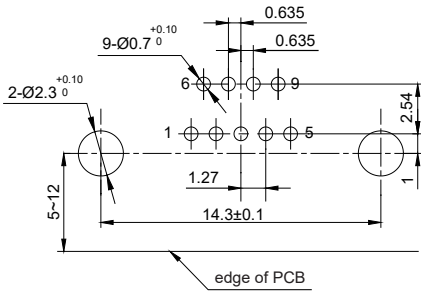
R04J-74PIF-J



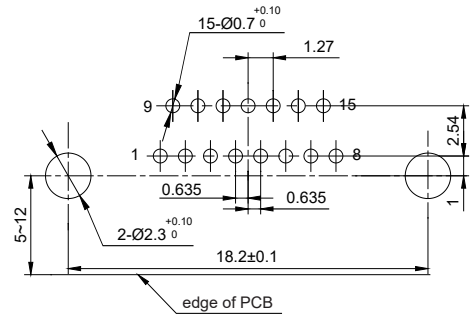
R04J-100PIF-J

R04J Series Right Angle to PCB Connectors Type J--PCB Layout

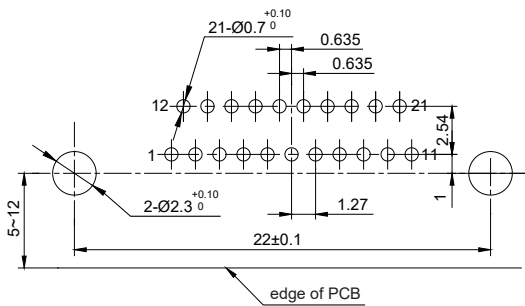
- Patterns Shown are for Connectors Mounting Side of PC Board
- PCB Layout: 1.27*2.54mm
- Receptacle Connectors: R04J-9~100RHF-J



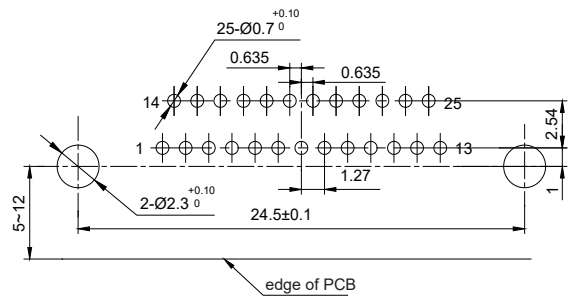
R04J-9RHF-J



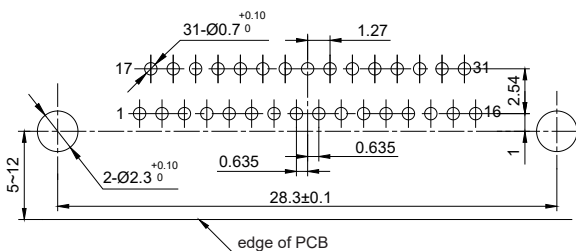
R04J-15RHF-J



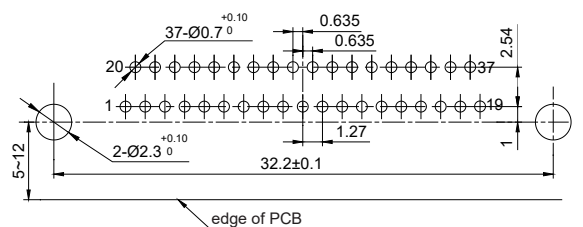
R04J-21RHF-J



R04J-25RHF-J

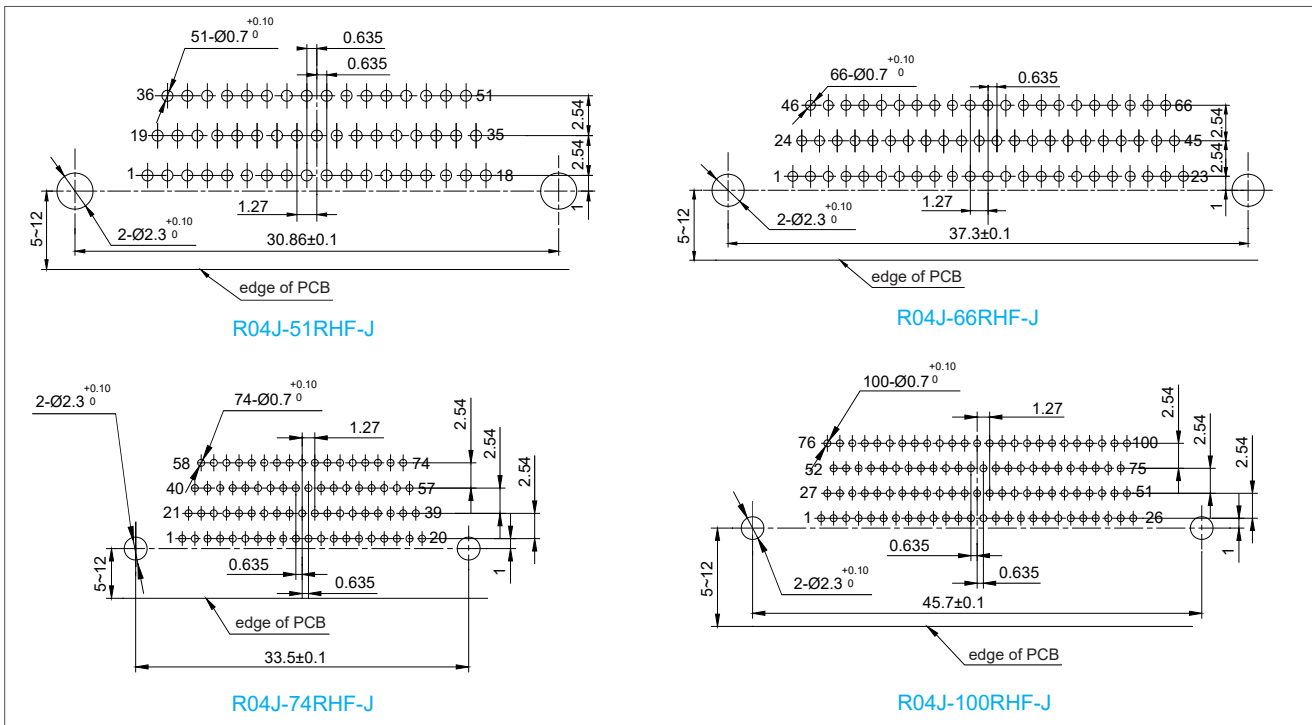


R04J-31RHF-J



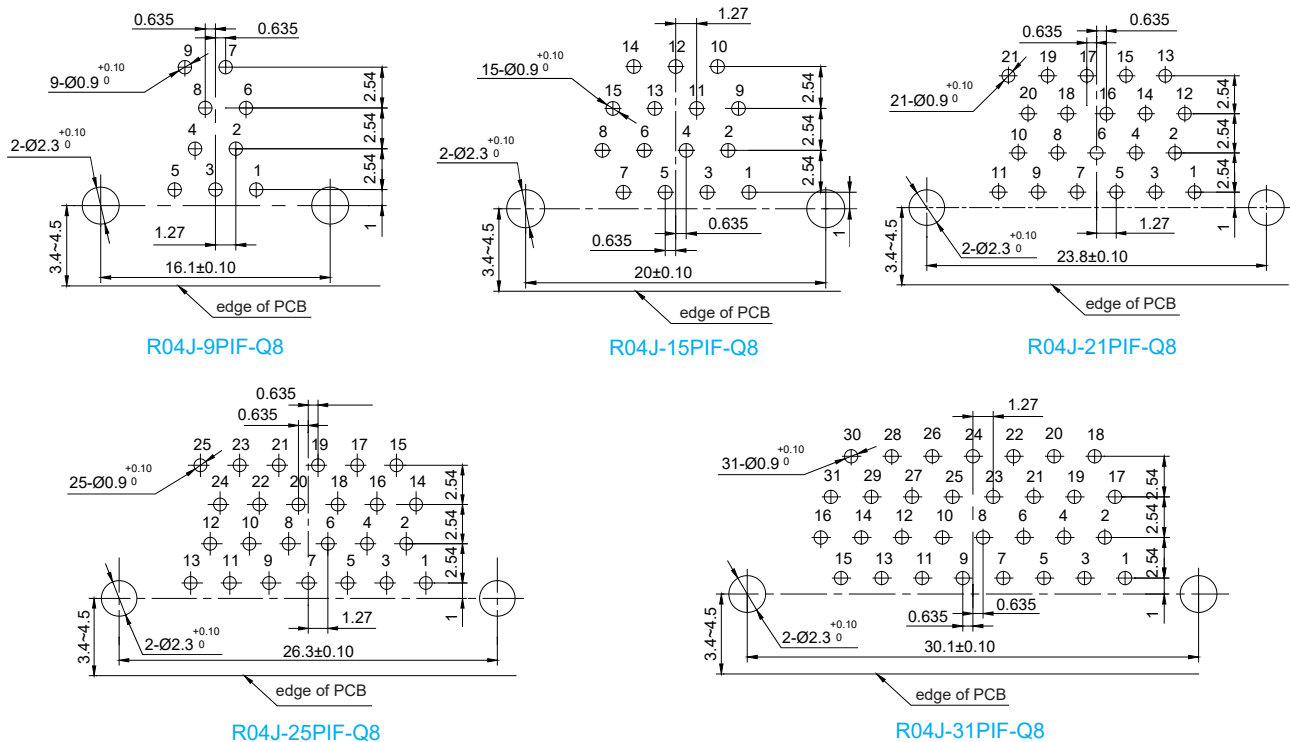
R04J-37RHF-J

Remark: All dimensions are in mm.

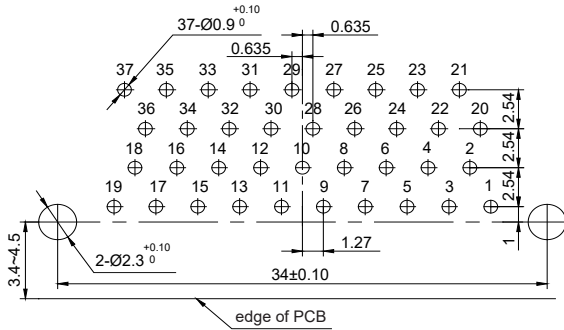


R04J Series Right Angle to PCB Connectors Type Q8--PCB Layout

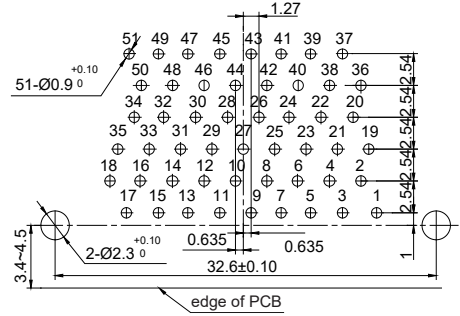
- Patterns Shown are for Connectors Mounting Side of PC Board
- PCB Layout: 2.54*2.54mm
- Plug Connectors: R04J-9~51PIF-Q8



Remark: All dimensions are in mm.



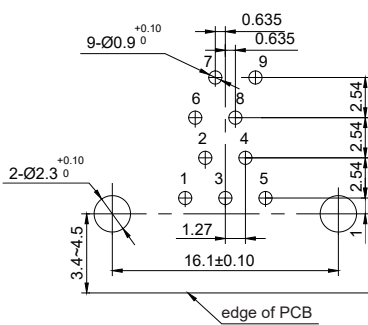
R04J-37PIF-Q8



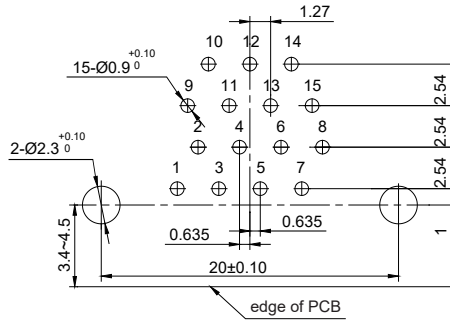
R04J-51PIF-Q8

R04J Series Right Angle to PCB Connectors Type Q8--PCB Layout

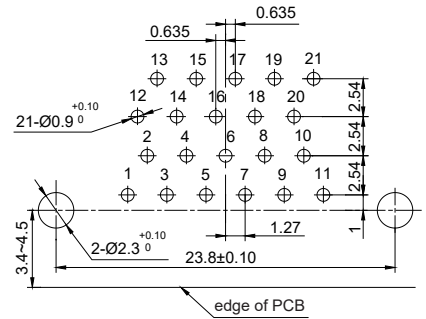
- Patterns Shown are for Connectors Mounting Side of PC Board
- PCB Layout: 2.54*2.54mm
- Receptacle Connectors: R04J-9~51RHF-Q8



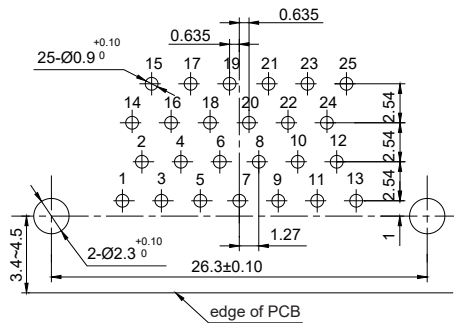
R04J-9RHF-Q8



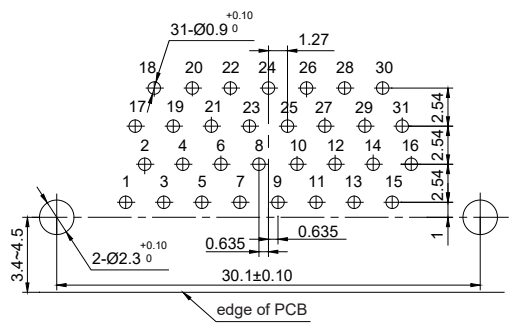
R04J-15RHF-Q8



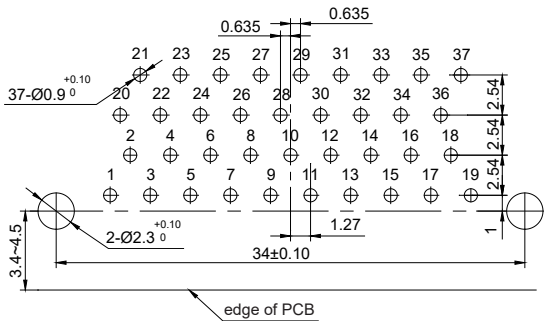
R04J-21RHF-Q8



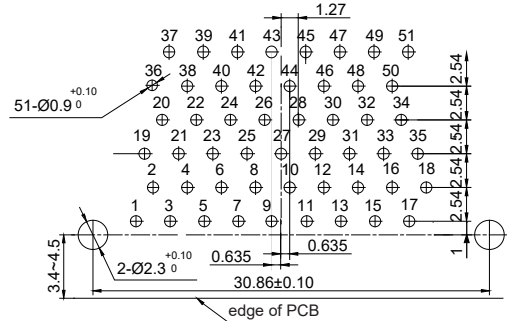
R04J-25RHF-Q8



R04J-31RHF-Q8



R04J-37RHF-Q8

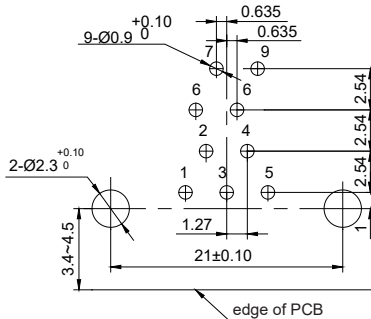


R04J-51RHF-Q8

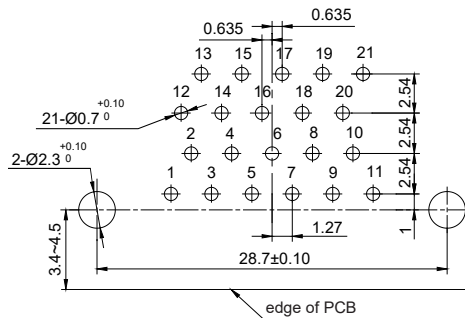
Remark: All dimensions are in mm.

R04JC Series Right Angle to PCB Connectors Type Q--PCB Layout

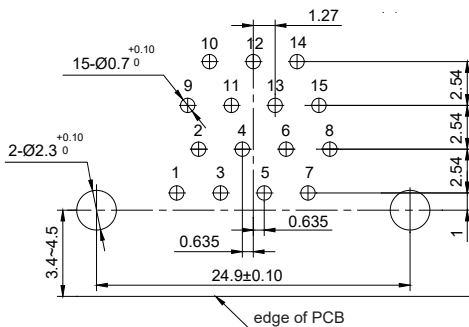
- Patterns Shown are for Connectors Mounting Side of PC Board
- PCB Layout: 2.54*2.54mm
- Receptacle Connectors: R04JC-9~51RHF-Q



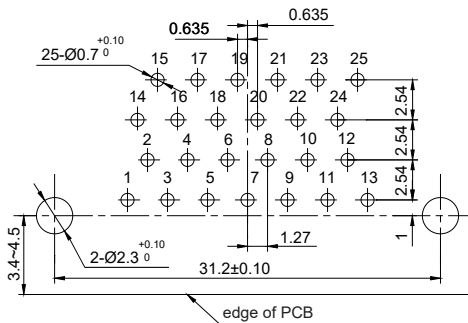
R04JC-9RHF-Q



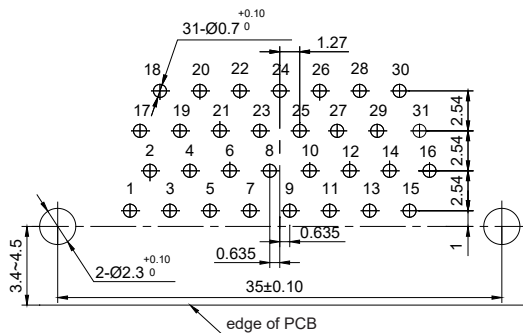
R04JC-21RHF-Q



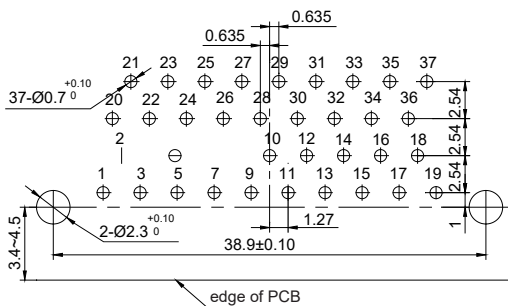
R04JC-15RHF-Q



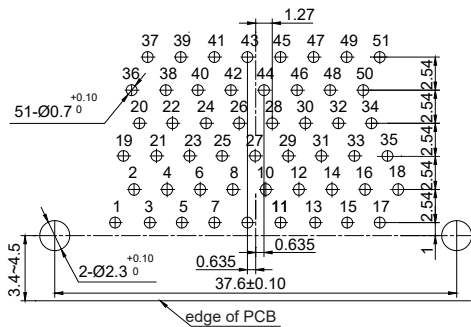
R04JC-25RHF-Q



R04JC-31RHF-Q



R04JC-37RHF-Q



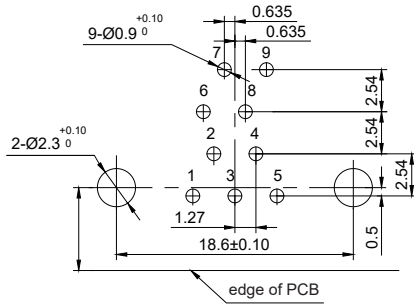
R04JC-51RHF-Q

Remark: All dimensions are in mm.

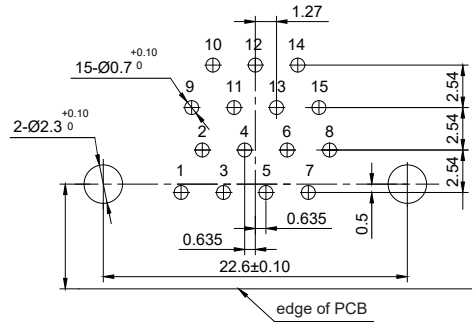


R04JA Series Right Angle to PCB Connectors Basic Type--PCB Layout

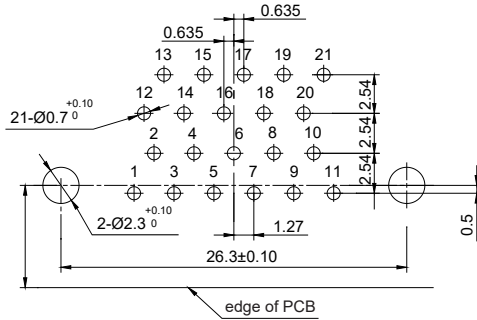
- Patterns Shown are for Connectors Mounting Side of PC Board
- PCB Layout: 2.54*2.54mm
- Receptacle Connectors: R04JA-9~51RHF



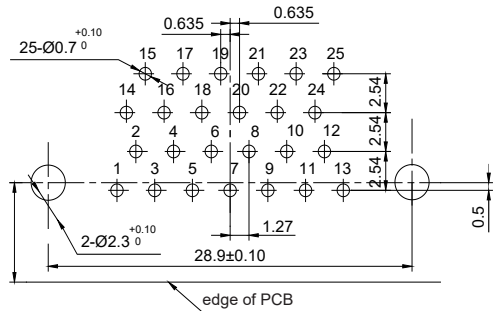
R04JA-9RHF



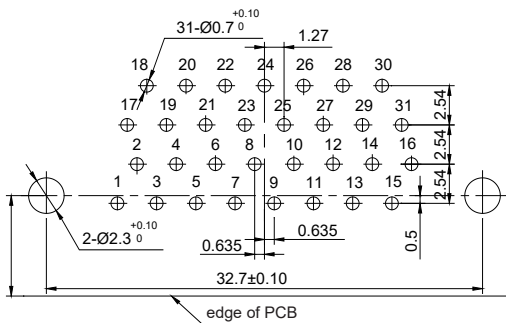
R04JA-15RHF



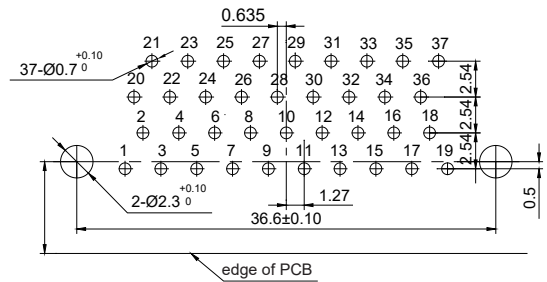
R04JA-21RHF



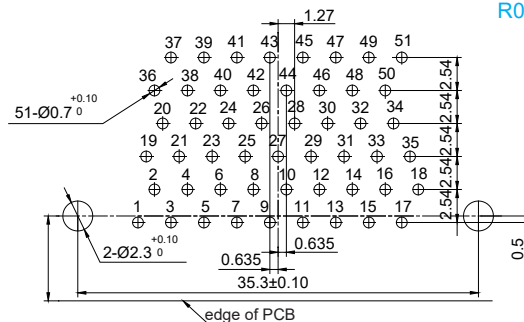
R04JA-25RHF



R04JA-31RHF



R04JA-37RHF



R04JA-51RHF

Remark: All dimensions are in mm.

